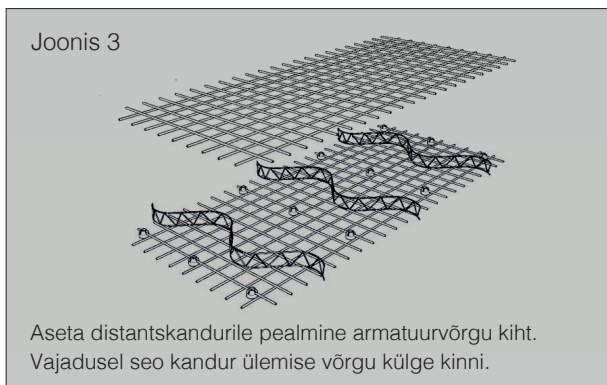
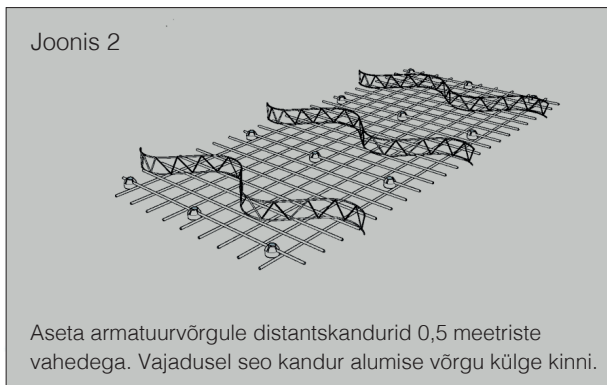
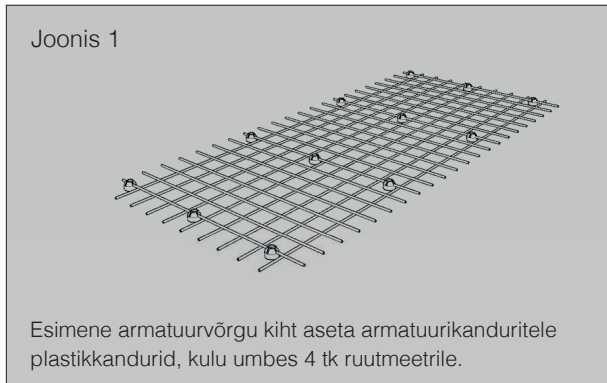
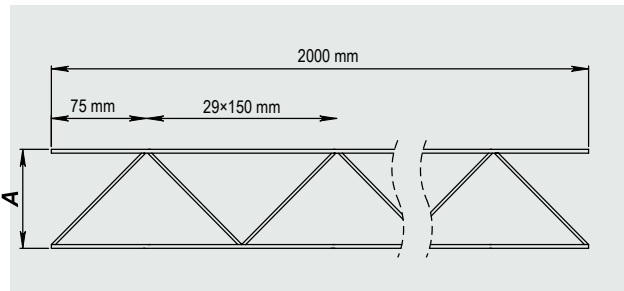


# DISTANTSKANDUR "USS"

## Kasutusotstarve

Kiireks ja lihtsaks armatuurvõrgu või sirgete armatuurteraste vahekauguse fikseerimiseks. Tagab kindla ja stabiilse jalgealuse betoonivalu töodel.

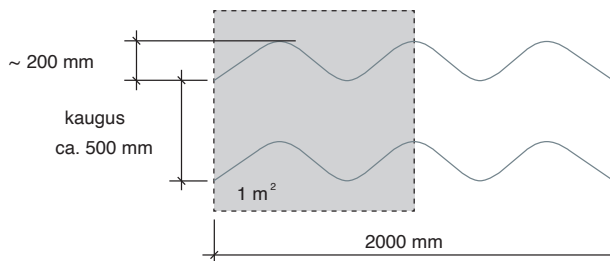


### A = kõrgus

Laotoode	30, 40, 50, 60, 70, 80, 90, 100, 110, 120, 130, 140, 150, 160, 170, 180, 190, 200 mm
Pikkus	2000 mm
Pakk	25 tk
Alus	500 tk

## Distantskandur "USS" pealtvaates

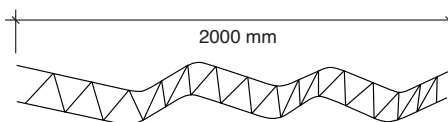
Kulu 1m<sup>2</sup> = 1 tk



## KOKKUHOID

### VARIANT A

Distantskandur "USS"  
h=120 mm/m<sup>2</sup>

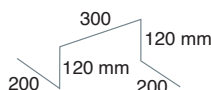


→ 0,615 kg/m<sup>2</sup>

↑ KOKKUHOID 82%

### VARIANT B

3D Rang Ø 12 mm/m<sup>2</sup>  
Kaal: 4 x 0.94 m x 0.888 kg/m



→ 3,34 kg/m<sup>2</sup>