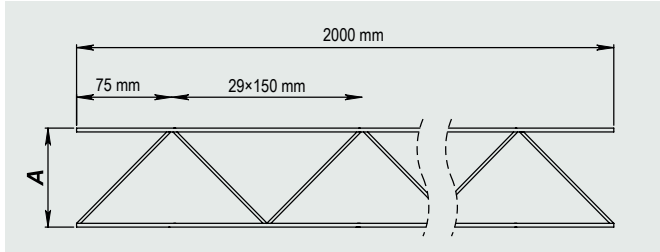


SPACER SNAKE

Intended use

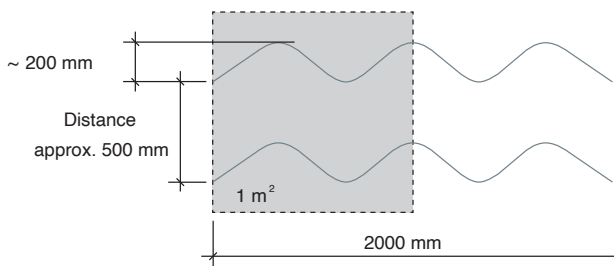
Allows quick and easy spacing of reinforcement mesh or bars. Ensures secure and stable footing for concrete pouring.



A = height

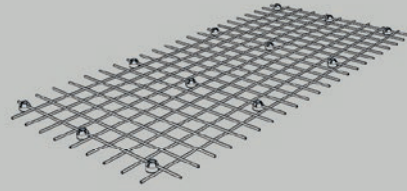
In stock	30, 40, 50, 60, 70, 80, 90, 100, 110, 120, 130, 140, 150, 160, 170, 180, 190, 200 mm
Length	2000 mm
Pack	25 pc.
Pallet	500 pc.

Top view of spacer SNAKE



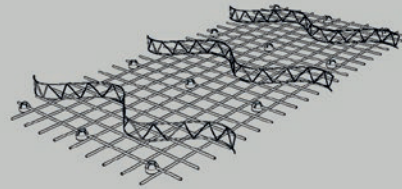
Consumption per 1m² = 1 pc.

Figure 1



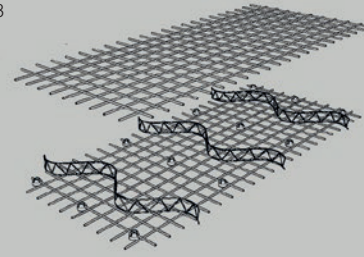
Place the first layer of reinforcement mesh on plastic spacers using approx. 4 spacers per square metre.

Figure 2



Place the SNAKE spacers on the reinforcement mesh using a pitch of 0.5 metres. Tie the spacers to lower mesh as needed.

Figure 3

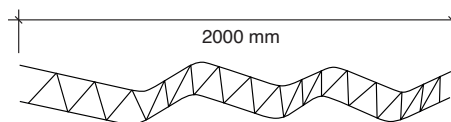


Place the upper reinforcement mesh on top of the spacers. Tie the spacers to upper mesh as needed.



SAVINGS

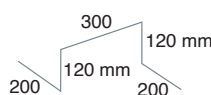
VERSION A Space SNAKE
h=120 mm/m²



→ 0,615 kg/m²

↑ SAVINGS 82%

VERSION B 3D stirrup Ø 12 mm/m²
Weight: 4 x 0.94 m x 0.888 kg/m



→ 3,34 kg/m²